



Students studying this course say:

"I enjoy the experience of being able to read about World War One in the Wider Reading. It is really interesting to understand how people's thoughts about the war change through the duration of the war."
Kieran Year 12

"English Literature at A level is a great subject if, like me, you enjoy reading. The teachers are enthusiastic and are really helpful; they make the subject very interesting. It has helped me with my essay writing skills which will be useful when I go to university. The course introduces you to a wider world of literature; it's not just Shakespeare!"
Katie Year 12



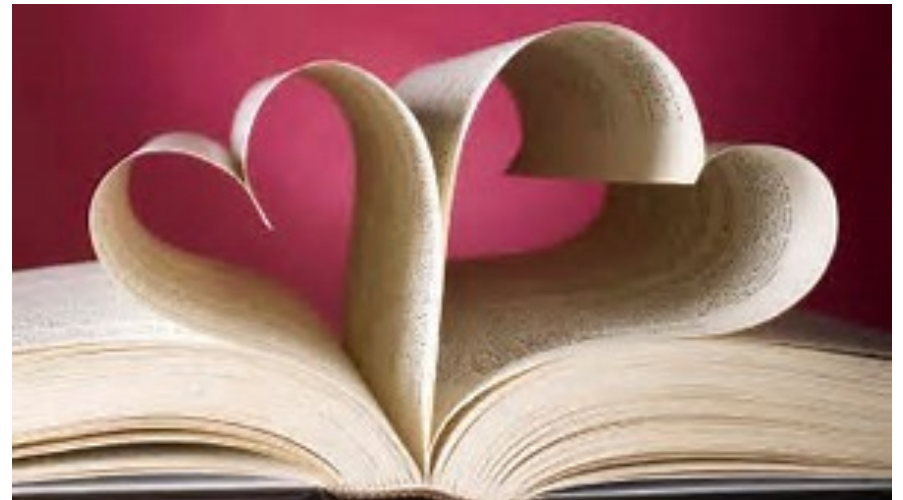
S⁺ Thomas More
Catholic Academy
FAITH | EXCELLENCE | RESPECT



Succeeding Together

Trinity Sixth Form

A Level English
Literature



What is the level of course I will take?

A Level - Level 3 - AQA 2741

What will I learn?

Core Content:

3.1 Love through the ages

3.2 Texts in shared contexts: WW1 and its aftermath

3.3 Independent critical study: Texts across time

How will the course help me after Sixth Form?

English Literature is a fascinating course and many of our students go on to study English Literature at degree level.

It is a long established route into degrees such as Law.
English Literature will demonstrate that you have excellent written communication skills.

How will I be assessed?

Paper 1: Love through the ages:

Study of three texts: One poetry and one prose text, of which one must be written pre-1900, and one Shakespeare play. The exam will include two unseen poems.

Assessed:

- Written exam: 3 hours
- Open book in Section C only
- 75 Marks
- 40% of A –Level

Questions:

Section A:Shakespeare: One passage-based question with linked essay(25 marks)

Section B: Unseen poetry: Compulsory essay question on two unseen poems(25 marks)

Section C: Comparing texts: One essay question linking two texts (25 marks)

Paper 2: Texts in Shared Contexts: Option 2A: WW1 and its aftermath

Study of three texts: one prose, one poetry and one drama (of which one must be written post-2000)
The exam will include an unseen extract.

Assessed:

- Written exam: 2 hours 30 minutes
- Open book
- 75 marks
- 40% of A-Level

Questions:

Section A: Set tasks. One essay question on set text (25 marks)

Section B: Contextual linking

- One compulsory question on an unseen extract(25 marks)
- One essay question linking two texts(25 marks)

PLUS

Non-exam assessment: Independent Critical Study: Texts across time:

Comparative critical study of two texts, at least one of which must have been written pre-1900.

One extended essay (2500 words) and a bibliography

Assessed:

- 50 marks
- 20% of A-Level
- Assessed by teachers
- Moderated by AQA

How will I learn?

You will learn in a variety of ways. Some of the lessons are taught, some involve class and group discussion. You will need to do research and wider reading to help with your studies.

The coursework elements allow the course to be quite personalised. You will need to do independent work and research for this.

English Literature classes are full of discussion, talk and reflection, and are dynamic and interactive for a subject that demands written outcomes for assessment.